



Database Part VII

Exporting info from DB's

John Kim
Field Station Programs
San Diego State University





What to export?

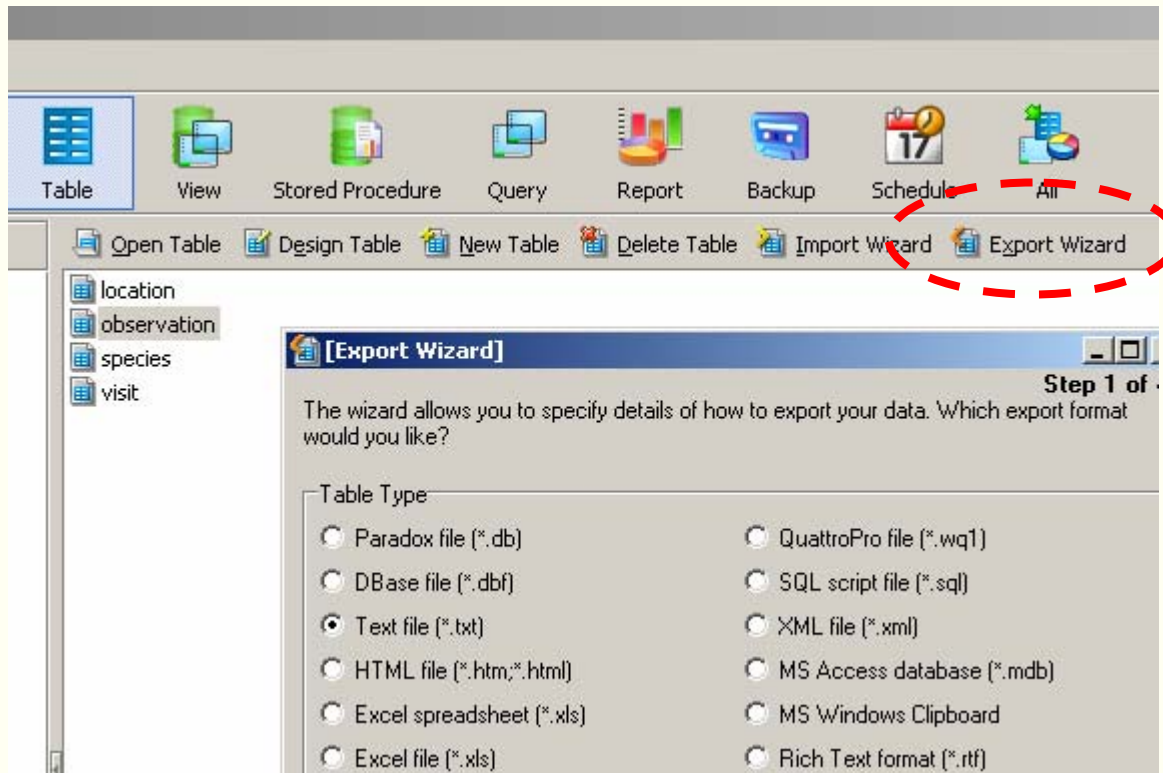
- Metadata
 - Database Design Notes, Lookup tables
 - Diagrams (from DB Designer)
File -> Export -> Export Model as Image
 - MySQL Create Code (from DB Designer)
File -> Export -> SQL Create Script...





What to export?

- ❑ Raw data
 - Export tables as text (from Navicat)



- mysqldump for backups





What to export?

- Queries
 - Query MySQL code
 - Query results via web interface – more on this with Marshall

